



RF SWITCH GEAR

Unit description:

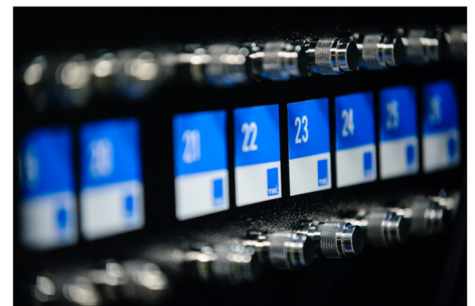
RFswitchGEAR – reconfigurable manual RF switch/attenuator unit

The RFswitchGEAR unit is used to attenuate (decrease) and switch the RF signals between wireless devices. Custom defined configuration is available.



Technical specifications:

| | |
|-----------------------------------|------------------------------------|
| Impedance: | 50 Ω |
| Frequency Range: | 10 to 3000 MHz |
| Attenuation Range: | 0 – 90 dB |
| Quantity of signal inputs: | 70 |
| Quantity of signal outputs: | 10 |
| RF Connectors: | N female |
| 35W-100W RF Attenuator on inputs: | 70 |
| High-Quality 42U rack: | 1 |
| Operating Temperature: | 0 ~ 40 °C |
| Operating Humidity: | 10 ~ 90 % |
| Optional roof cooling fan: | AC Supply 100-240 VAC @ 47 – 63 Hz |



We design and customize each RFswitchGEAR unit to your individual configuration requirements.